

Mass Comparators  
**MC**  
series

**MC-1000**

1100 g × 0.0001 g

**MC-6100**

6100 g × 0.001 g

**MC-10K**

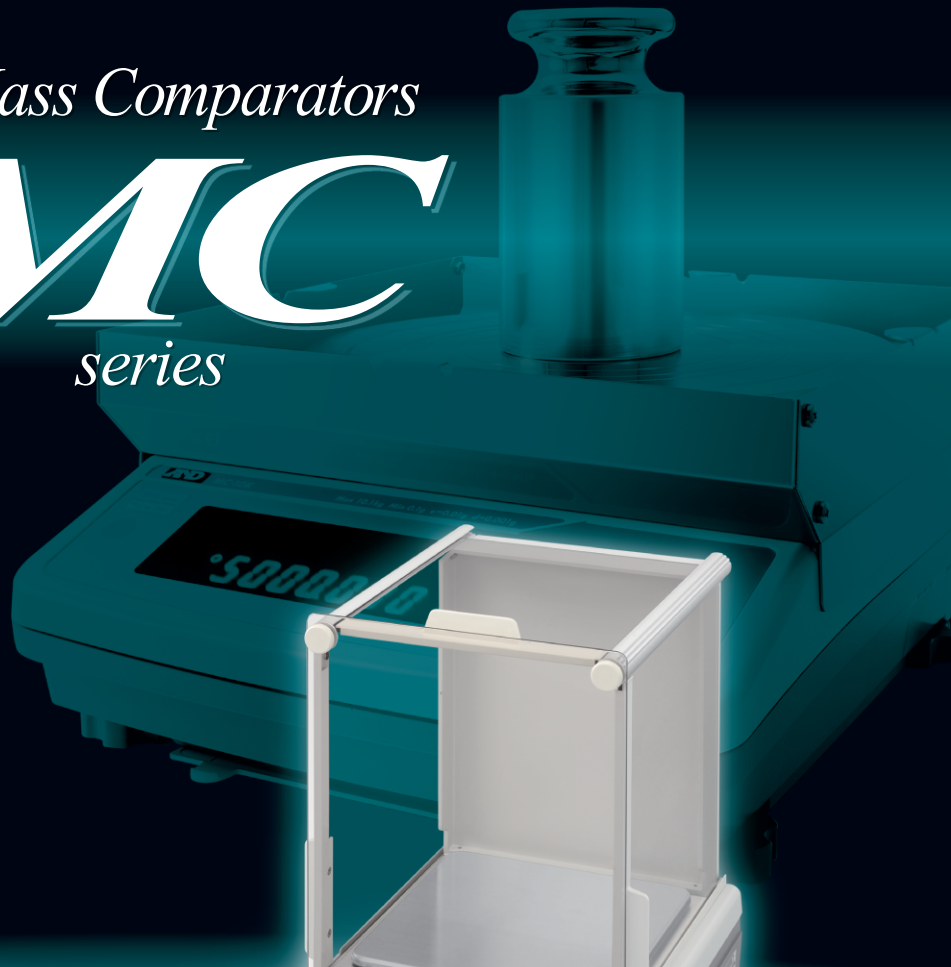
10.1 kg × 0.001 g

**MC-30K**

31 kg × 0.01 g

**MC-100KS**

101 kg × 0.1 g



**MC-10K**



**MC-6100**



**MC-100KS**



**AND** ...Clearly a Better Value  
A&D Company, Limited  
<http://www.aandd.jp>

# Revealed – Here Are What A&D Use To Manage Their Masses!

It's not easy to find high performance, quality mass comparators that meet your budget, is it? Discover how A&D, an ISO17025 accredited calibration laboratory as well as being a weighing equipment manufacturer, can finally solve such problems for you—.

## 1. Enhanced stabilizing filter

High resolution balances like the MC series can respond to even the slightest environmental disturbances. For smooth and accurate mass comparison, the MC series is equipped with a special stabilizing function that copes with the effect of drafts or vibrations.

## 2. Simplified calibration of the balance

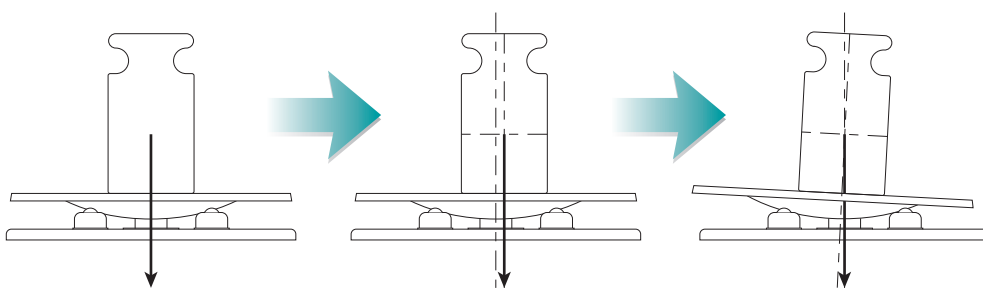
Using the internal mass, you can ensure the balance accuracy with one key press when changes to the environment (such as temperature or location) take place. The internal mass value can be corrected as necessary.

## 3. Various options to minimize possible measurement errors

Even under a perfectly controlled weighing environment, there still remain errors that can arise from operation. The following tools are effective in managing such errors:

### Auto-centering pan (available for MC-1000/6100/10K/30K)

Corrects eccentric loading automatically by bringing the mass to the center.



Please also visit our video library at [www.aandd.jp](http://www.aandd.jp) to see how it operates!



MC Series  
with auto-centering pans



### Remote controller (AD-8922A)

Enables operations without directly touching and consequently shaking the balance.



### Static eliminator (AD-1683)

Instantly neutralizes charged objects such as the operator's clothes to ensure stable weighing.







## Specifications

Models	MC-1000	MC-6100	MC-10K	MC-30K	MC-100KS
Weighing capacity	1100 g	6100 g	10.1 kg	31 kg	101 kg
Minimum weighing value	0.0001 g	0.001 g		0.01 g	0.1 g
Repeatability (standard deviation) *1	0.0005 g (for 1 kg) 0.0004 g (for 500 g)	0.004 g (for 5 kg) 0.0015 g (for 2 kg)	0.005 g (for 10 kg) 0.004 g (for 5 kg)	0.015 g (for 20 kg)	0.2 g (for 100 kg) 0.1 g (for 60 kg)
Linearity	±0.003 g	±0.03 g		±0.2 g	±2 g
Sensitivity drift (10 to 30°C / 50 to 86°F)	±2 ppm / °C			±3 ppm / °C	±6 ppm / °C
Accuracy immediately after internal calibration *2	±0.010 g	±0.15 g		±1.5 g	±10.0 g
Operating environment	5°C to 40°C (41°F to 104°F), 85%RH or less (no condensation)				
Display refresh rate	5 times/second or 10 times/second				
Display mode *3	Gram, kilogram (for MC-10K/30K/100KS), ounce, pound, pound-ounce, troy ounce, metric carat, momme, pennyweight, grain, counting mode, percent mode, density mode, and a user-programmable unit				
Standard interface	RS-232C				
Weighing pan size	128 x 128 mm	165 x 165 mm	270 x 210 mm		386 x 346 mm
External dimensions	210 (W) x 317 (D) x 86 (H) mm		300 (W) x 355 (D) x 111 (H) mm		Display unit: 260 (W) x 164 (D) x 202 (H) mm Platform: 346 (W) x 443 (D) x 130 (H) mm Cable length: 3 m
Net weight	Approx. 4.6 kg	Approx. 5.1 kg	Approx. 9.3 kg		Approx. 18 kg
Power consumption	Approx. 11 VA (supplied to the AC adapter)				Approx. 15 VA (supplied to the AC adapter)

\* 1 Repeatability when the auto-centering pan or an automatic weight loader is used under good environmental conditions.

\* 2 Accuracy immediately after internal calibration performed under good environmental conditions. The values are for the weighing capacities.

\* 3 Either tael (Singapore/HK jewelry/Taiwan) or tola can be added upon request.

## Options

### For MC-1000/6100

- GX-02** \*4 Quick USB interface with cable  
**GX-04** \*4\*5 Comparator output with a buzzer/RS-232C/Current loop output  
**GX-06** \*4\*5 Analog output/Current loop output  
**GX-12** Animal weighing pan  
**GX-13** Density determination kit (for MC-1000 only)  
 \* 4 Only one of GX-02, GX-04, GX-06 or the standard RS-232C interface can be used.  
 \* 5 Factory-installed options

### For MC-10K/30K

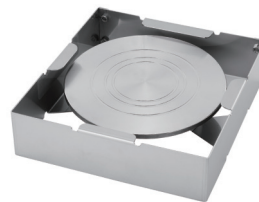
- GX-04K** \*6 Comparator output with a buzzer/RS-232C/Current loop output  
**GX-06K** \*6 Analog output/Current loop output  
**GX-07K** Waterproof RS-232C cable (25P-9P, 5 m)  
**GXX-012** Animal weighing pan  
**GXX-015** Carrying case  
 \* 6 Only one of GX-04K, GX-06K or the standard RS-232C can be used.  
 The MC-10K/30K are not IP65 compliant with these options.

### For MC-100KS

- GP-04** \*7 Comparator output with a buzzer/RS-232C/Current loop output  
**GP-06** \*7 Analog output/Current loop output  
**GP-07** \*8 5-meter extension cable  
**GP-12** Animal weighing pan  
**GP-21** Underhook  
**GP-22** AD-8121B printer support  
 \* 7 Only one of GP-04, GP-06 or the standard RS-232C can be used.  
 \* 8 Factory-installed option

## Accessories

- AD-1603-E2** \*9 Calibration masses, OIML class E2  
**AD-1603-F1** \*9 Calibration masses, OIML class F1  
**AD-1682** Rechargeable battery unit  
**AD-1683** Static eliminator  
**AD-1684** Electrostatic fieldmeter  
**AD-1687** Weighing environment logger  
**AD-1688** Weighing data logger  
**AD-1689** Tweezers for calibration mass  
**AD-8127** Compact printer  
**AD-8526** RS-232C/Ethernet (TCP/IP) converter  
**AD-8527** Quick USB adapter  
**AD-8920A** Remote display  
**AD-8922A** Remote controller  
**AX-MC1000PAN** Auto-centering pan (MC-1000)  
**AX-MC6100PAN** Auto-centering pan (MC-6100)  
**AX-MC10K/30KPAN** Auto-centering pan (MC-10K/30K)  
**AX-SW128** Foot switch  
**AX-USB-25P** RS-232C/USB converter  
 \* 9 Selectable from 1 mg to 20 kg.



Auto-centering pan

**A&D** ...Clearly a Better Value

### A&D Company, Limited

3-23-14 Higashi-Ikebukuro, Toshima-ku, Tokyo 170-0013 JAPAN  
 Telephone:[81](3) 5391-6132 Fax:[81](3) 5391-6148  
<http://www.aandd.jp>

### A&D ENGINEERING, INC.

1756 Automation Parkway, San Jose, CA 95131 U.S.A.  
 Telephone:[1](408) 263-5333 Fax:[1](408) 263-0119

### A&D Australasia Pty Ltd.

32 Dew Street, Thebarton, South Australia 5031 AUSTRALIA  
 Telephone:[61](8) 8301-8100 Fax:[61](8) 8352-7409

### A&D INSTRUMENTS LTD.

Unit 24/26 Blacklands Way Abingdon Business Park,  
 Abingdon, Oxon OX14 1DY UNITED KINGDOM  
 Telephone:[44](1235) 550420 Fax:[44](1235) 550485

### <German Sales Office>

Hamburger Straße 30 D-22926 Ahrensburg GERMANY  
 Telephone:[49](0) 4102 459230 Fax:[49](0) 4102 459231

### A&D KOREA Limited

817, Manhattan Bldg., 33, Gukjegeumyung-ro 6-gil,  
 Yeongdeungpo-gu, Seoul, 07331, KOREA  
 Telephone:[82](2) 780-4101 Fax:[82](2) 782-4280

### A&D RUS CO., LTD.

Verenskaya str.17, Moscow, 121357 RUSSIA  
 Telephone: [7] (495) 937-33-44 Fax: [7] (495) 937-55-66

### A&D Instruments India Private Limited

509 Udyog Vihar Phase V  
 Gurgaon-122 016, Haryana, INDIA  
 Telephone: [91](124) 471-5555 Fax: [91](124) 471-5599